



Water Coolers

BARRIER-FREE UNIVERSAL SPLIT-LEVEL VERSACOOLER® II

P8ACSL, PACSL, Mechanical Activation

Suggested Specification

Model P8ACSL shall deliver 8.0 gph of 50°F water at 90°F ambient and 80°F inlet water. Model PACSL is a non-refrigerated drinking fountain and delivers ambient water. Models P8ACSL and PACSL shall include front and side push pads to **Mechanically activate the flow of water electricity is not required.** Basin shall be designed to eliminate splashing and standing water. Bubbler shall have a flexible guard and operate between 20 and 120 psi. Cabinet finish shall be Sandstone powder coated paint or brushed stainless steel. Cooling system shall use R-134a refrigerant. Shall comply with ANSI A117.1 and ADA. Shall be listed by Underwriters' Laboratories to U.S. and Canadian standards. Shall comply with ANSI/NSF 61.

Models

P8ACSL delivers 8.0 gallons of chilled drinking water per hour. **PACSL** is a non-refrigerated fountain. These models satisfy CABO/ANSI A117.1. When accessory apron is used on the upper unit, this cooler will comply with ADA guidelines when properly installed. Apron is not required when installed in an alcove or if a wing wall is installed on the right side for a right high unit or the left side for a left high unit. Models also meet guidelines for children's accessibility providing the floor to orifice height is 30 inches and proper clear floor space is provided for frontal approach.

Standard Features

- > **Universal design includes a universal side access panel and universal drain pipe** that allows the unit to be installed left high, right low or right high, left low
- > Built-in 100 micron strainer stops particles before they enter the waterway
- > Waterways are lead-free in materials & construction
- > Stainless Steel top
- > Flexible, one-piece bubbler guard
- > Heavy Duty galvanized steel frame
- > High Efficiency cooling tank and coil
- > Refrigerant R-134a
- > Four push pad activation
- > External stream height adjustment



Can be installed left high and right low...

OR



right high and left low

Finishes

- > Standard cabinet finish: Sandstone powder coated paint
- > Optional finishes at additional cost: Stainless Steel, Regency Bronze, and optional powder coated finishes

Options (at additional cost)

- > Glass Fillers (factory installed)
- > Push Handle (029603-004)
- > Push Back (029603-005)
- > Push Down (029603-006)
- > Apron for Upper Unit
- > Stainless Steel Bubbler

Installation

- > Prior to roughing, consult with local, state and federal codes for proper mounting height
- > Shipped with complete instructions and wall mounting bracket
- > Universal side access panel and universal drain pipe for right high or left high installation included
- > Removable side and front panels provide easy access for installation



ADA Compliant when installed in an alcove, or with an accessory apron, or with a right wing wall for a right high unit or left wing wall for a left high unit.



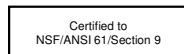
Components in this fountain are lead free as defined by the Safe Drinking Water Act Amendments of 1986, and the Lead Contamination Control Act of 1988.

Powder Coated Finish Warranty (Continental limits of the United States and Canada): Three years on the powder coat finish provided that the water cooler has not been subjected to abuse, misuse or alteration.

Limited 5-Year Warranty (Continental limits of the United States and Canada): Five years on the sealed refrigeration system and most component parts. Detailed warranty certificate enclosed with each water cooler; sample available upon request.

Export Warranty: One year on component parts. Detailed warranty certificate enclosed with each drinking fountain; sample copy available upon request.

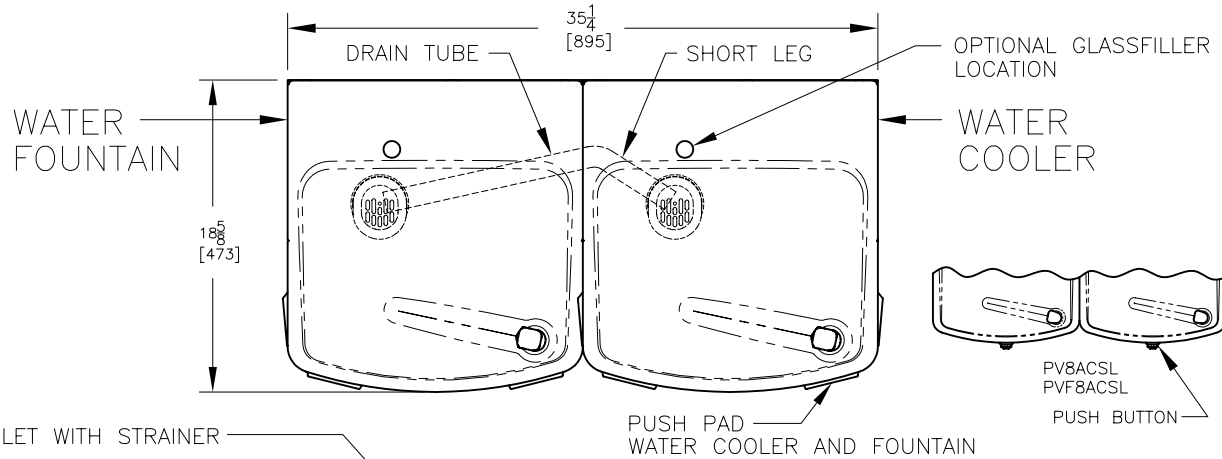
Models covered by this specification complies with all known Plumbing Codes. Listed by Underwriters' Laboratories to U.S. and Canadian standards.



Model	50°F Drinking Water 90°F Ambient Air Temperature*			Hot 'N Cold™ Model	115 Volts, 60 Hz			Glass Filler Acces. Option	Cabinet Color Finish	Net Wt. Approx.
	Rated Capacity GPH	Base Rate GPH	Pre-Cooler		Compr. HP	Full Load Amps	Rated Watts			
P8ACSL**	8.0	8.0	No	No	1/4	4.6	460	Yes	Yes	84 lbs.
PACSL								Yes	Yes	50 lbs.

* Industry Standard Rating Condition 80°F inlet water temperature
** Special export models available, operable on 220-240 volts, 50/60 Hz

OASIS® VERSACOOLER® II MODELS
P8ACSL, P8ACSL, PF8ACSL, PF8ACSL, PV8ACSL, PVF8ACSL
SUNROC MODELS ADA8ACB, ADA8ACBH, ADAF8ACB, ADAF8ACBH



NOTES:

1. TRAP, STOP VALVE AND ELECTRICAL OUTLET NOT FURNISHED.
2. ALLOW 4 INCHES [102 MM] MIN. PER SIDE FOR VENTILATION.
- *3. RECOMMENDED ADULT BARRIER FREE HEIGHT INSTALLATION SHOWN. REDUCE HEIGHT BY 3 INCHES FOR INSTALLATIONS USED PRIMARILY BY CHILDREN AGES 12 AND YOUNGER. UNIT SHALL ALSO HAVE A MINIMUM CLEAR FLOOR SPACE 30[760] BY 48[1220]. ADJUST VERTICAL DIMENSIONS AS REQ'D TO COMPLY WITH FEDERAL, STATE, AND LOCAL CODES.
4. ALL DIMENSIONS ARE IN INCHES. DIMENSIONS IN BRACKETS [] ARE IN MILLIMETERS.

$\frac{3}{8}$ O.D. WATER INLET WITH STRAINER

CONNECT COOLER REMOTE OUTLET TO FOUNTAIN WATER INLET WITH FITTING SUPPLIED

$\frac{1}{4}$ [6] HANGER MOUNTING HOLE, 2 PLCS.

PF8ACSL(E) & PVF8ACSL FILTER WITH FLEXIBLE TUBING

*33 [838] ORIFICE
 $\frac{1}{4}$ IPS WASTE OPTIMUM LOCATION STUB OUT 1[25]

*29 5/16 [744]

*21 1/4 [540]

*18 1/16 [459]

*17 [432]

*16 1/2 [419]

25/32 [20] 2 PLCS.

$\frac{1}{2}$ [13] 2 PLCS.

$\frac{1}{2}$ [13]

4 [102]

7 [178] 2 PLCS.

$\frac{1}{4}$ [6] MOUNTING HOLES 8 PLCS.

ELECTRICAL OUTLET OPTIMUM LOCATION

$\frac{3}{8}$ WATER SUPPLY OPTIMUM LOCATION STUB OUT 1[25]

17 3/8 [448]

6 3/8 [162] 2 PLCS.

12 3/4 [324] 2 PLCS.

ELECTRONIC EYE MODELS ONLY

5/16 [8] HANGER MOUNTING HOLES, 4 PLCS.

14 1/8 [359] 2 PLCS.

1 1/2 [38] 2 PLCS.

2 1/4 [57]

7 3/32 [196] 2 PLCS.

15 7/16 [392] 2 PLCS.

1 [25]

24 1/16 [611]

*35 5/16 [897]

*27 [686]

*21 1/4 [540]

*13 9/32 [337]

6 [152]

18 3/32 [480]

*38 3/16 [970]

8 1/4 [209]

1 1/4 O.D. TAILPIECE

6 7/32 [158]

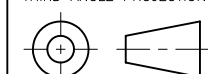
7 1/16 [179]

T15 DRIVE SIZE TORX HEAD SCREWS

AIR FLOW

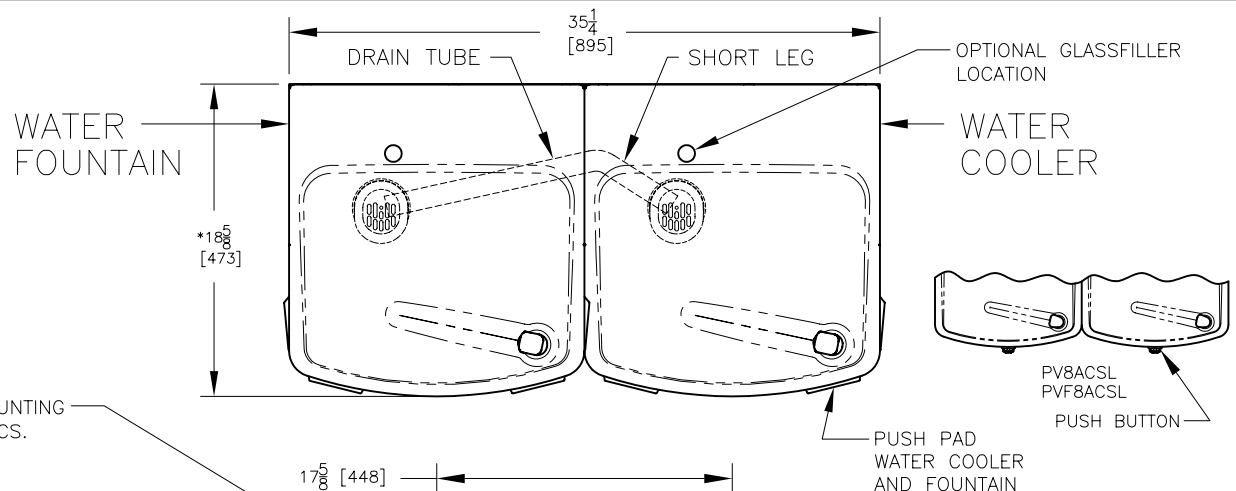
RIGHT SIDE HIGH
AS DELIVERED

THIRD ANGLE PROJECTION



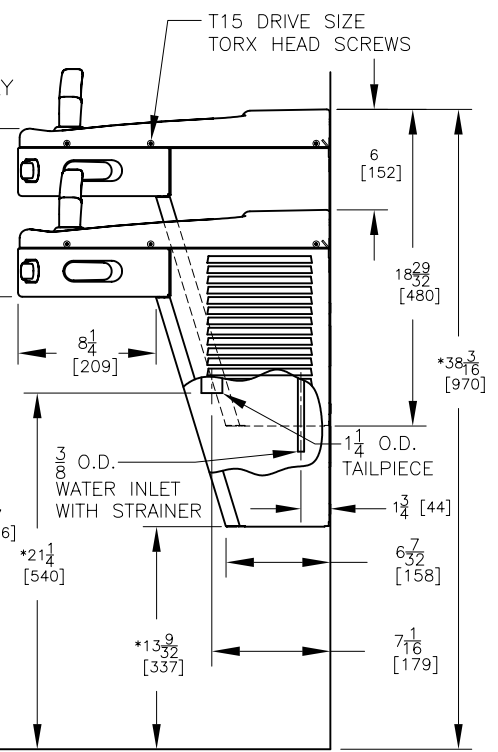
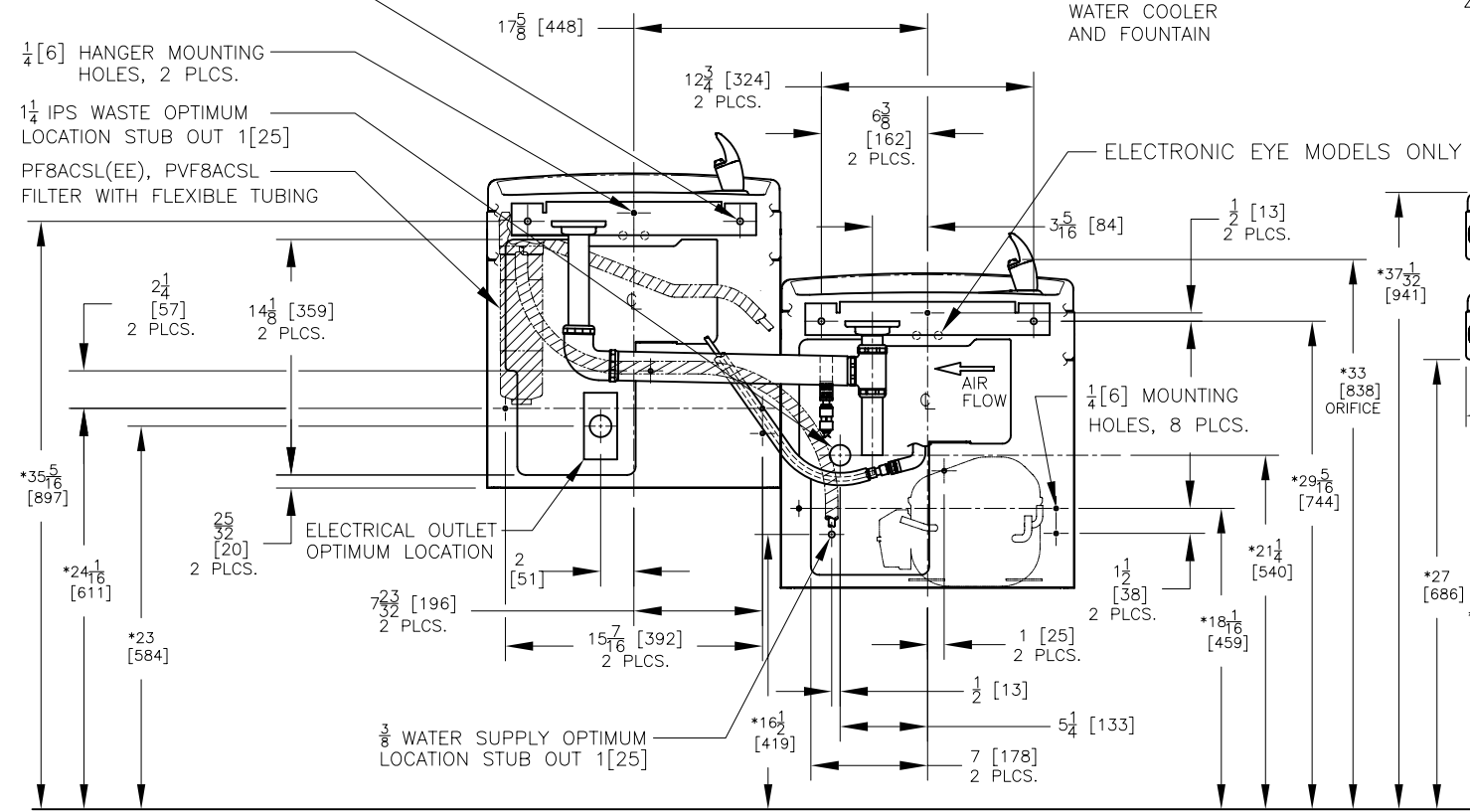
ROUGHING-IN
AND
DIMENSIONAL DRAWING

OASIS® VERSACOOLER® II MODELS
P8ACSL, P8ACSL EE, PF8ACSL, PF8ACSL EE, PV8ACSL, PVF8ACSL
SUNROC MODELS ADA8ACB, ADA8ACBH, ADAF8ACB, ADAF8ACBH

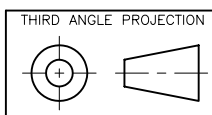


- NOTES:**
1. TRAP, STOP VALVE AND ELECTRICAL OUTLET NOT FURNISHED.
 2. ALLOW 4 INCHES [102 MM] MIN. PER SIDE FOR VENTILATION.
 3. RECOMMENDED ADULT BARRIER FREE HEIGHT INSTALLATION SHOWN. REDUCE HEIGHT BY 3 INCHES FOR INSTALLATIONS USED PRIMARILY BY CHILDREN AGES 12 AND YOUNGER. UNIT SHALL ALSO HAVE A MINIMUM CLEAR FLOOR SPACE 30 [760] BY 48 [1220]. ADJUST VERTICAL DIMENSIONS AS REQ'D TO COMPLY WITH FEDERAL, STATE, AND LOCAL CODES.
 4. ALL DIMENSIONS ARE IN INCHES. DIMENSIONS IN BRACKETS [] ARE IN MILLIMETERS.

- $\frac{5}{16}$ [8] HANGER MOUNTING HOLE, 4 PLCS.
- $\frac{1}{4}$ [6] HANGER MOUNTING HOLES, 2 PLCS.
- $1\frac{1}{4}$ IPS WASTE OPTIMUM LOCATION STUB OUT 1 [25]
- PF8ACSL (EE), PVF8ACSL FILTER WITH FLEXIBLE TUBING



RIGHT SIDE LOW
AFTER CONVERSION



ROUGHING-IN
AND
DIMENSIONAL DRAWING